

# METAL FABRICATION

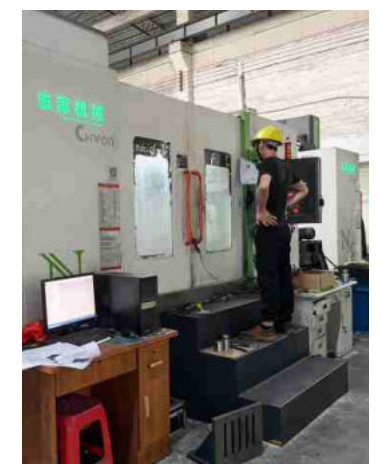


Metal Welding   CNC Machining   Mechanical Assembly   Finishing  
FOSHAN XIANGXINGHE CNC TECHNOLOGY CO., LTD

Xiangxinghe has developed a broad spectrum of expertise to offer an unrivalled combination of metal product welding and machining manufacturing, assembly, finishing, and delivery services.

Xiangxinghe's service industries cover steel structure engineering, marine engineering, nuclear power engineering, building bridge engineering, engineering machinery and equipment, metallurgical equipment, mining equipment and other fields.

We are proud to be a valued complete one stop shop for manufacture of metal fabrications and components supplier to leading international OEM's businesses today.





# Welding & Fabrication

## 1 Cutting

- Laser cut
- Sawing
- Plasma cut
- Flame cut



## 2 Stack and Sort

The material being cut are marked according to drawing. The marked steel is stacked to facilitate distribution to each production position.

## 3 Deburring

There are many sharp burrs on the edge of the cut steel. Deburring can reduce the porosity of the weld and improve the quality of welding.



## 4 Rolling

Our plate rolling machine can roll steel plates up to 30mm thick, which can meet most plate rolling needs.



## 5 Grinding

Grinding is both the preparation of a weld seam and the post-processing are important in achieving a high-quality joint.



## 6 Welding

- CO2 shielded arc welding
- Laser welding
- Argon arc welding
- Submerged arc welding

## 7 Fit Up

Before formal welding, each metal needs to be assembled together to give the metal parts a preliminary shape.



## 8 Punching

The automatic punching machine can satisfy various functions such as stainless steel punching, angle steel cutting, round tube cutting, square tube 45 degree/90 degree bending, etc. by replacing punching dies of different sizes, specifications and shapes.



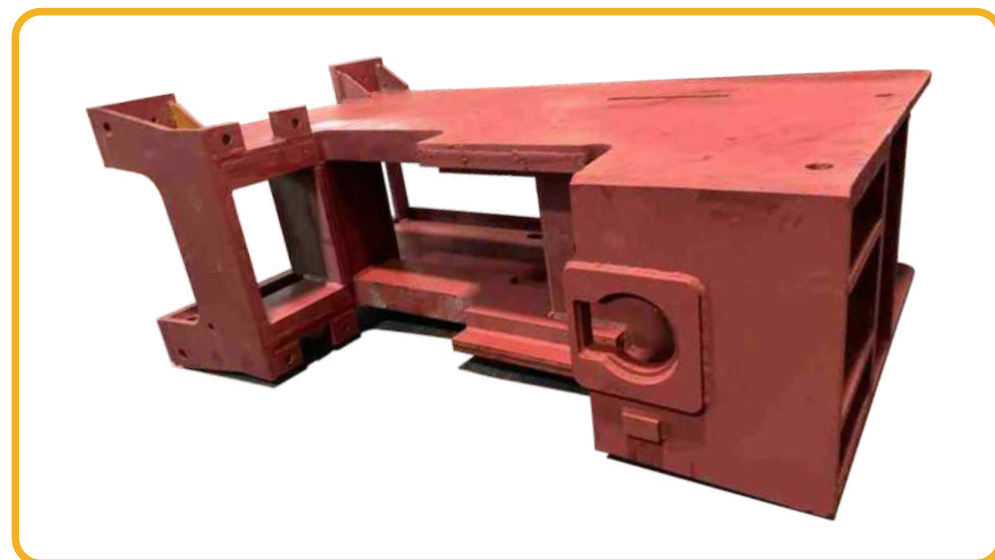




CASES



# CASES





# CNC Machining

[more...](#)

Xiangxinghe equipped with CNC vertical lathes, CNC horizontal milling machines and other equipment with various machining ranges. The maximum capacity can reach 10 meters in length & width and 4 meters in height. The minimum processing size can be as small as 10mm in diameter and 1mm in thickness. Our wide range of machining can meet most of the needs on the market.



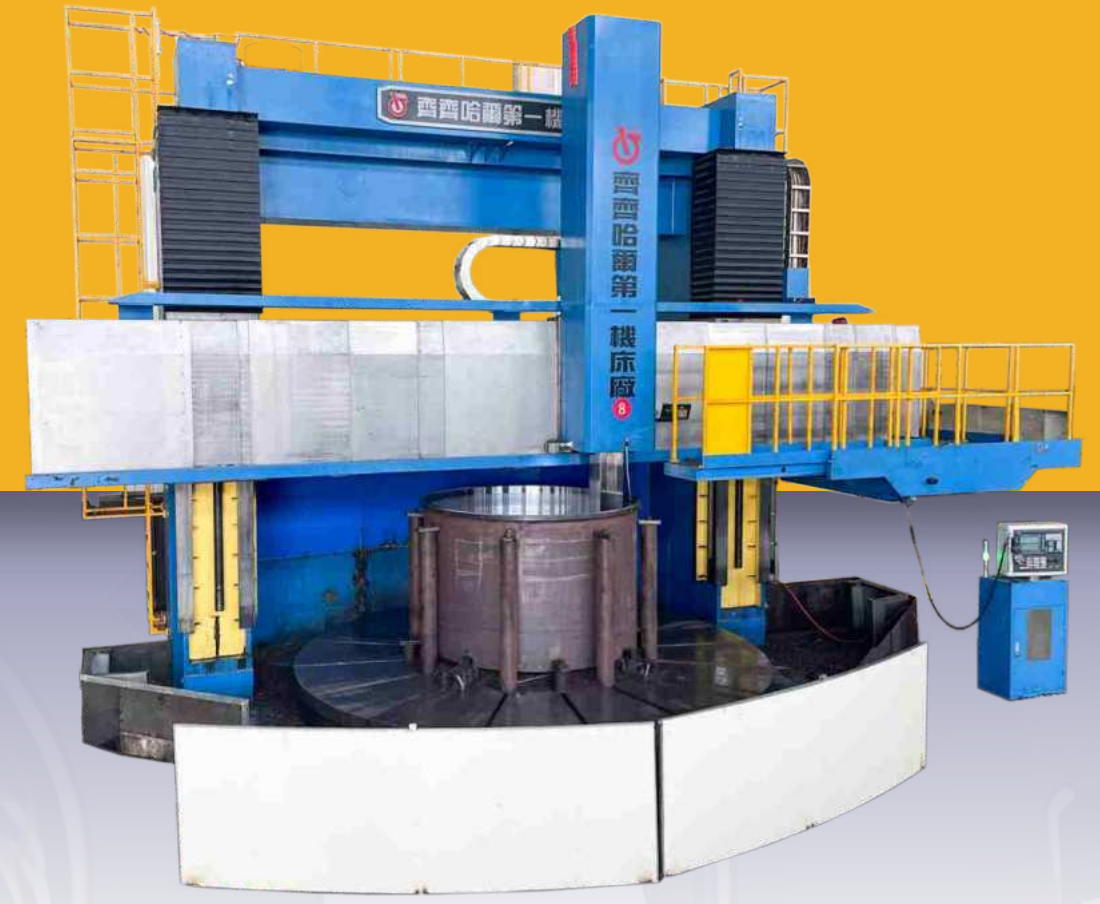
**CNC Vertical Lathe**

Capacity: 3,500\*2,500mm



**CNC Horizontal Machining Center**

Capacity: 2,600\*1,500mm



**CNC Vertical Lathe**

Capacity: 5,000\*3,200mm

**CNC Gantry Boring & Milling Machine**

Capacity: L12,000\*W6,300\*H3,150mm



**CNC Gantry Machining Center**

Capacity: 3,000\*2,500\*1,200mm



**CNC Vertical Machining Center**

Capacity: 4,000\*2,200\*1,000mm



**CNC Gantry Machining Center**

Capacity: 6,000\*4,500\*1,700mm





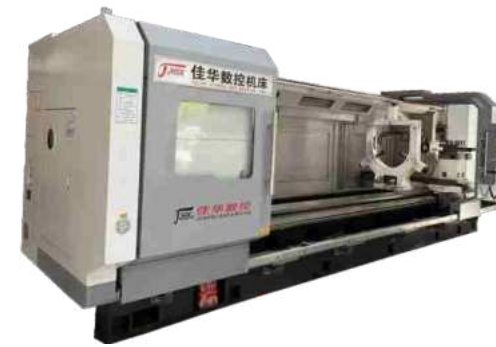
**Toshiba horizontal five-axis machining center**

Capacity:1,300x10,00x800mm



**CNC Lathe**

Capacity:1,250\*4,000mm



**CNC Lathe**

Capacity:1,250\*4,000mm



**CNC Vertical Lathe**

Capacity:2,000\*2,000\*2,000mm



**CNC Machining Center**

Capacity:1,680\*800\*800mm



**CNC Horizontal Boring Machine**

Capacity:4,000\*10,000mm



**CNC horizontal machining center**

Capacity:2,000\*1,500mm

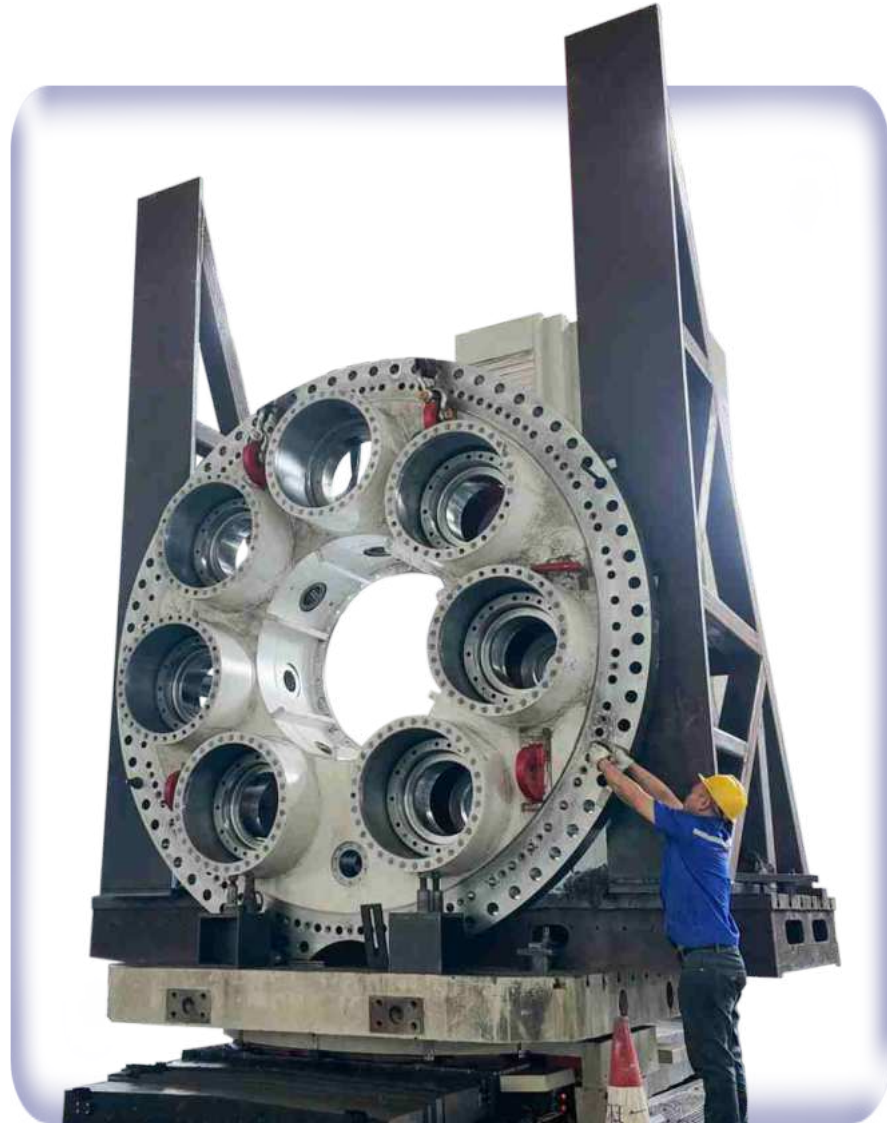
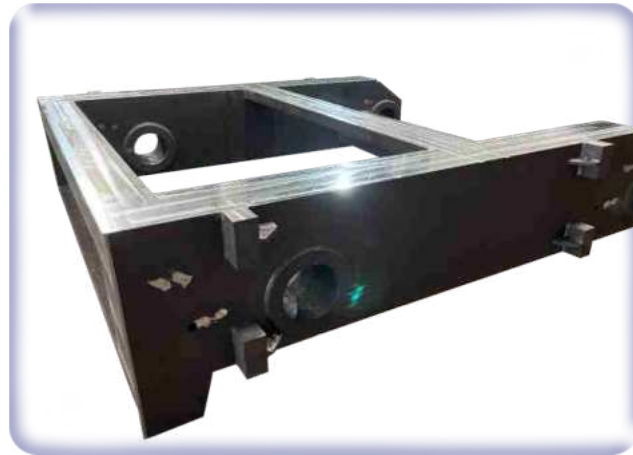
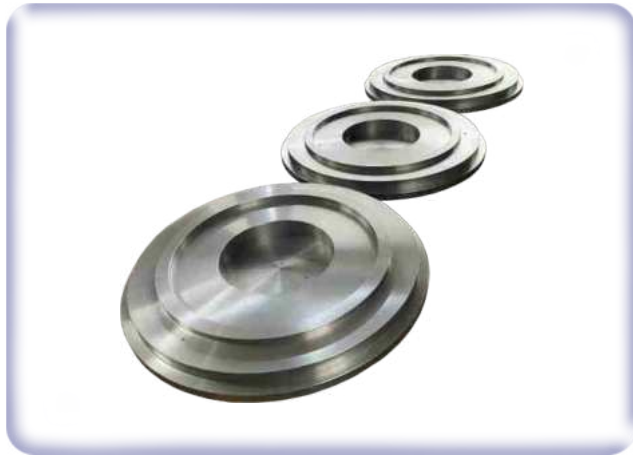


**Toshiba Horizontal Boring Machine**

Capacity:6,000\*3,000mm



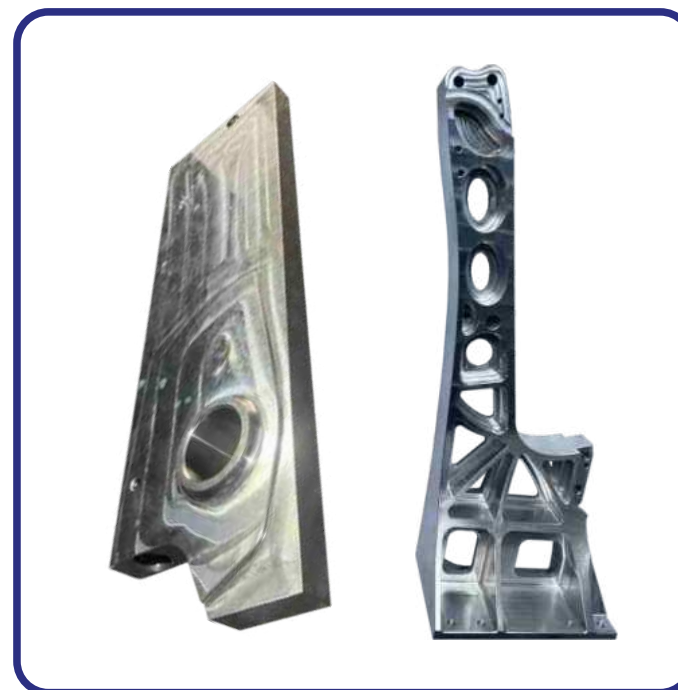




CASES



# CASE5





# Mechanical assembly

## cnc machining parts



### LARGE-SIZED WELDING & MACHINING

Our welding capacity is up to 50 tons / pc, while machining capacity is up to 10m length x 4m height. Large metal parts are generally used in stressbearing positions in an equipment.



### MEDIUM-SIZED WELDING & MACHINING

Medium and small metal parts are generally used for connecting parts of equipment. Our machining capacity covers milling, turning and boring of all sizes.

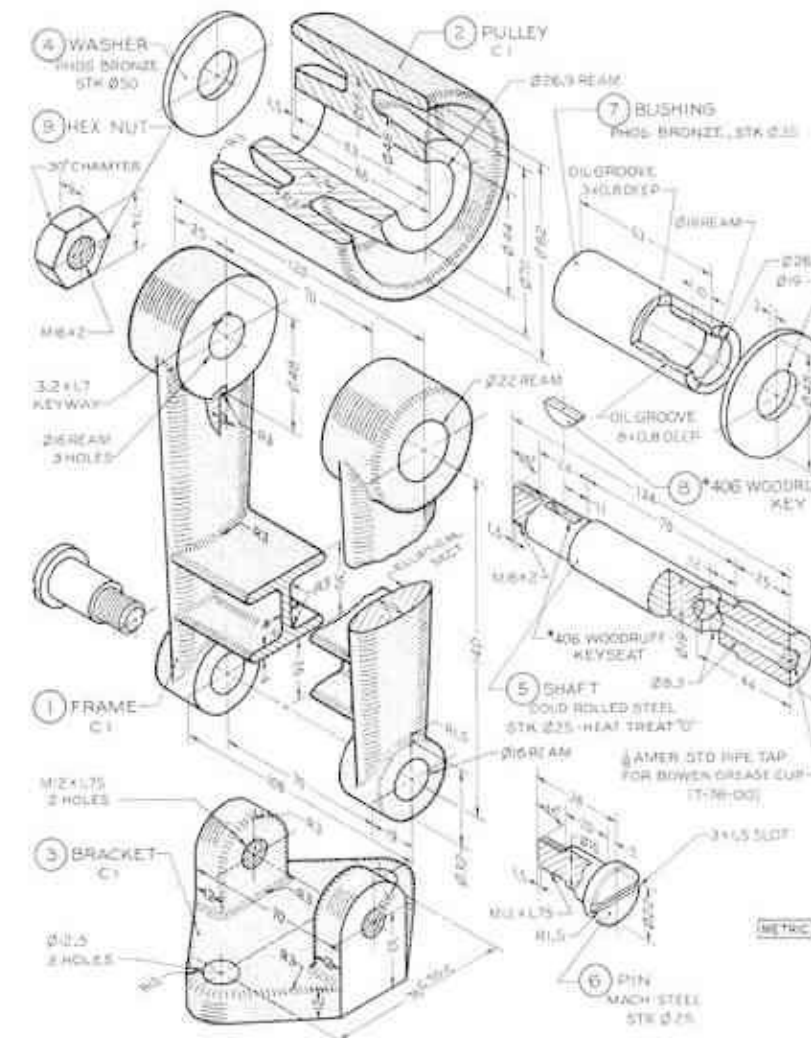


### SMALL MACHINING

Small machined parts are usually require high precision. Their locking and fixing function directly affects the quality of the entire machine. Our small machine processing precision capability reaches  $\pm 0.001\text{mm}$ .



# Assembly



- Drawing analysis & Cost calculation
- Metal part welding
- Metal part CNC machined
- Secondary components assembly
- Find problems
- Analysis & solve problems
- Assembly with purchased parts
- Whole set assembly and testing
- Disassembly
- Surface finishing
- Whole set assembly again
- Packing and delivery

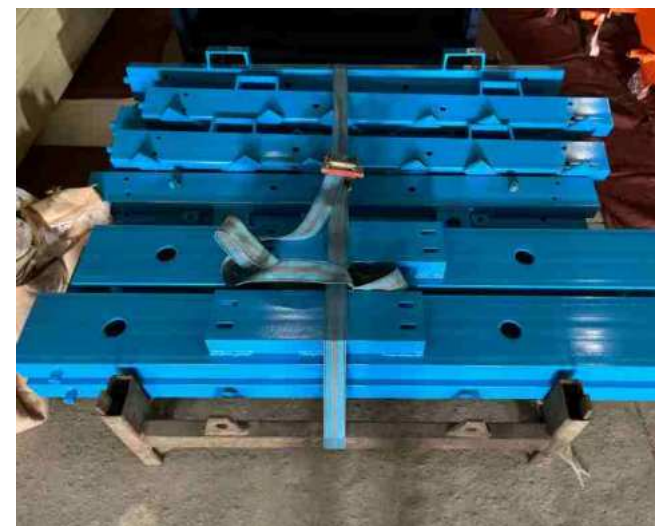


# Powder Coating



XiangXingHe have 20 years experience in the powder coating industry, assisting clients with a range of projects in the domestic, commercial and industrial sectors. Our premises is well equipped to cater to objects large and small, depending on the individual requirements of our clients.

The performance characteristics of powder coating exceed the characteristics achieved from conventional solvent based coatings. A powder coated surface is a long lasting, high-quality finish resistant to cracking, peeling, fading and scratching, leaving the surface abrasion, corrosion and chemically resistant. Powder coating is available in a wide range of finishes, colors and effects, such as ripple, texture, leather, pearl and much more.







★ FOSHAN XIANGXINGHE CNC TECHNOLOGY CO., LTD

Web.: [www.xiangxinghe.com](http://www.xiangxinghe.com)

Tel.: +86 757 86762603

Factory Add.: No.22, Pengshan Road, Gaoming District, Foshan City, Guangdong, CN

Email: [info@xiangxinghe.com](mailto:info@xiangxinghe.com)